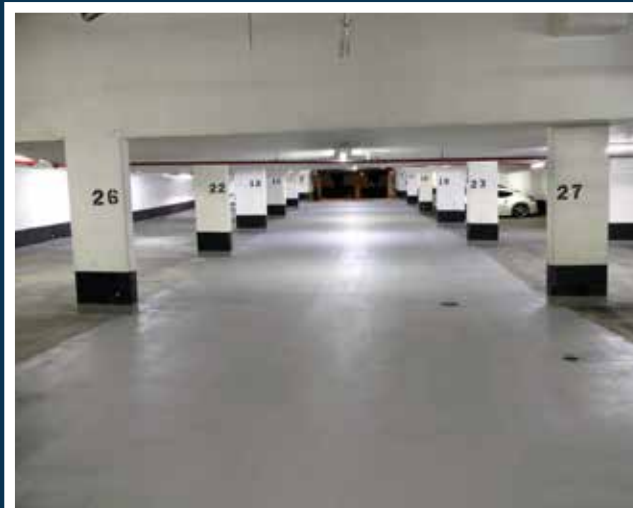


STONDECK

Parking Deck Repair & Waterproofing
Structural Waterproofing & Leak Stopping
Concrete Repair & Restoration
Low Temperature Joint Sealing & Repairs
Fast Track Caulking & Sealing
Low Temperature Lines & Markings
Corrosion Inhibitor Application



PARKING DECK SOLUTIONS



5 YEARS AFTER INSTALLATION -
ARE THE HIGH TRAFFIC AREAS IN YOUR PARKING DECK STILL PERFORMING?



ENGINEERED DURABILITY FOR PARKING STRUCTURES











StonDeck parking deck waterproofing systems have been designed from the bottom up to offer protection, flexibility and durability where it matters most. Each area in a parking structure demands a unique solution to address the concerns of durability, traffic level, flexibility, and availability of access. StonDeck has an Industry leading selection of polymer systems designed to solve these issues, including any combination of extreme durability, crack bridging flexibility and rapid return to service. Each system is designed to enhance the visual appearance, improve light reflection and prevent water and chloride ingress into the underlying structure.

- Durability driven systems
- Unique resin technologies
- Excellent slip-resistant profile
- Chloride protection
- Brightens up dull parking decks
- Waterproofing and crack-bridging protection
- UV stable options
- Modular design approach

THE RIGHT SYSTEM DESIGNED FROM THE GROUND UP

Moisture Mitigation							✓
Localized Flexibility (Crack Banding)	✓	✓	✓	✓		✓	
Complete Flexibility					✓	✓	
Aggressive Traction	✓	✓	✓	✓		✓	✓
High Abrasion Aggregate	✓	✓		✓		✓	✓
UV Stable Finish Layer	✓					✓	
Extreme Thermal Cycling	✓					✓	
Extreme Abrasion Resistance	✓	✓	✓	✓		✓	✓
Chemical Resistance (Leaks)	✓	✓	✓	✓	✓	✓	
Chloride Ion Penetration	✓	✓	✓	✓	✓	✓	✓
Fast Turnaround Technologies	✓	✓	✓	✓	✓	✓	✓
	Entrance/Exit	Ramps	Turning Radius	Driving Aisles	Parking Stalls	Exterior	Slab on Grade

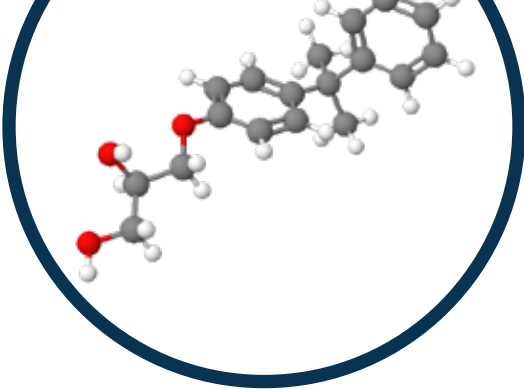
LEGEND

-  Waterproof
-  Chemical Resistant
-  UV Stable
-  Flexible
-  Tough
-  Rapid
-  Heavy Duty
-  Aesthetic
-  Longevity
-  Slip Resistant



THE **CHEMISTRY** OF DURABILITY

Bisphenol A Epoxy Structure



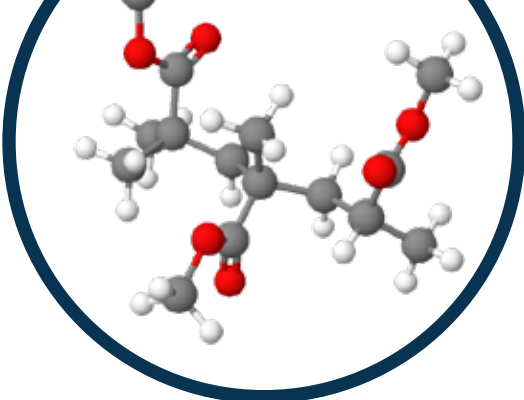
EPOXY

Epoxy technology has the longest proven track record of current traffic coating systems and can be customized to increase durability, rigidity, moisture resistance and ultimate strength. By optimizing resin chemistry we offer superior performance characteristics, when combined with unique packaging, Epoxy systems are an excellent choice for the protection of any parking structure.

- Superior impact resistance
- Extreme chemical resistance
- High wear characteristics
- Excellent abrasion resistance
- Enhanced bond to the substrate
- High aesthetics



MMA Polymer



METHYL METHACRYLATE

Stonhard Methyl Methacrylate (MMA) systems provide rapid curing options for critical areas of a parking structure that cannot be closed for extended periods, or when temperatures are outside the ideal norm for Epoxy and Polyurethane choices. MMA, when hybridized with Polyurethane, provides fast curing and flexible deck protection systems that do not compromise durability.

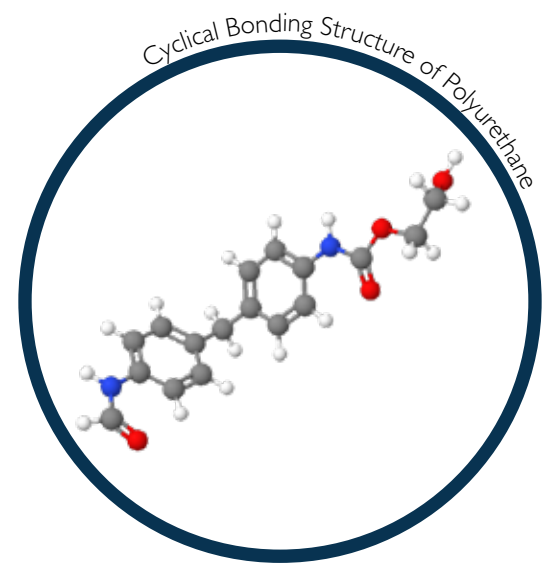
- Fast curing
- Durable
- Slip resistant
- Aggregate retention
- Abrasion resistance
- UV resistant



POLYURETHANE

Polyurethane resins are designed to provide excellent durability and flexibility. Resin formulation can be engineered to be tougher, increase impact and wear resistance and provide extreme flexibility that epoxy materials may not always be able to deliver. With a wide range of formulations designed to combine flexibility with class leading aggregate retention, Stonhard's Polyurethane systems offer best in class protection for suspended areas of a parking structure.

- Flexibility
- Chemical resistance
- Slip resistance
- Aggregate retention
- Abrasion resistance
- High aesthetics
- UV resistant formulations





CUSTOM **ENGINEER** YOUR **DURABILITY**

SYSTEM SNAPSHOT BY AREA



SLAB ON GRADE



STONDECK XD1
Rigid Slab on Grade
Slab on Grade | Rigid System | Decorative

INTERMEDIATE DECKS



STONDECK FD2
Flexible Light Duty Decking System
Value Engineered | Light Traffic Areas | Flexible | Decorative



STONDECK FD2 PLUS
Flexible Medium Duty Intermediate Deck System
Medium Duty | Flexible | Decorative | Durable



STONDECK FD2 HD
Flexible Heavy Duty Decking System
Heavy Duty | Flexible | Decorative | Durable



STONDECK QD2
Flexible Quick-Cure Decking System
Heavy Duty | Flexible | Decorative | Durable



STONDECK XD2
High Traffic Interior Drive Areas
Heavy Duty | Decorative | Tough | Durable

RAMPS



STONDECK XD3
Heavy Duty Ramp System
Heavy Duty | Decorative | Tough | Durable



STONDECK QD3
Quick-Cure Heavy Duty Ramp System
Heavy Duty | Fast Cure | Decorative | Durable

EXTERIOR DECKS



STONDECK FD4
Flexible UV Stable Exterior System
Heavy Duty | UV Stable | Exterior | Flexible



STONDECK XD4
High Traffic UV Stable Semi-Rigid System
Heavy Duty | UV Stable | Exterior | Tough



STONDECK QD4
Flexible UV Stable Quick Cure Exterior System
Heavy Duty | UV Stable | Fast Cure | Flexible



DURABILITY BY DESIGN

SYSTEM FEATURES & BREAKDOWN

SLAB ON GRADE



STONDECK XD1
Rigid Slab on Grade



Designed for slab on grade applications where moisture drive is not an issue. Rigid, cost-effective system to provide a true decking system on base levels of a parking deck. *Moisture Mitigation systems also available.



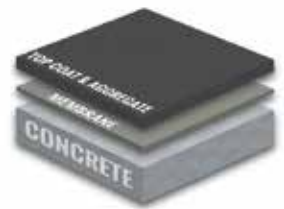
INTERMEDIATE DECKS



STONDECK FD2
Flexible Light Duty Decking System



Flexible decking system for low-traffic and parking stall applications. Cost effective system for new construction and repairs to low volume traffic areas.



STONDECK FD2 PLUS
Flexible Medium Duty Intermediate Deck System



Flexible decking system for medium-traffic garages, drive aisles and parking stalls. Cost effective upgrade to our FD2 system for new construction.



STONDECK FD2 HD
Flexible Heavy Duty Decking System



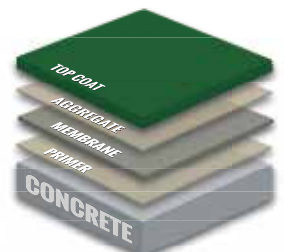
Full crack bridging system with heavy duty broadcast layer for high-traffic garages, drive aisles and parking stalls.



STONDECK QD2
Flexible Quick-Cure Decking System



MMA fast-cure, low temperature decking system ideal for repairs and refurbishment where time and temperature are a concern.



STONDECK XD2
High Traffic Interior Drive Areas



Semi-rigid, high wear interior deck system for heavily trafficked garages, and commercial use. Designed with low aggregate kick out and ultimate durability in mind.



RAMPS



STONDECK XD3 Heavy Duty Ramp System



Semi-rigid, high wear interior ramp coating system for heavily trafficked, spiral and commercial ramps.



STONDECK QD3 Quick-Cure Heavy Duty Ramp System



Semi-rigid MMA, fast cure, high wear interior/exterior ramp system for heavily trafficked spiral and commercial ramps.



EXTERIOR DECKS



STONDECK FD4 Flexible UV Stable Exterior System



UV stable, exterior full crack suppression decking system. Multi-layer design provides maximum durability and flexibility for ultimate protection of exposed top decks.



STONDECK XD4 High Traffic UV Stable Semi-Rigid System



UV stable, semi-rigid exterior ramp and entrance lane system. Designed to provide ultimate durability, low aggregate kick out and protection in these high traffic abrasion areas.



STONDECK QD4 Flexible UV Stable Quick Cure Exterior System



Fast cure, UV stable exterior MMA decking system. Multi-layer design to provide maximum durability and flexibility in exterior top deck applications.

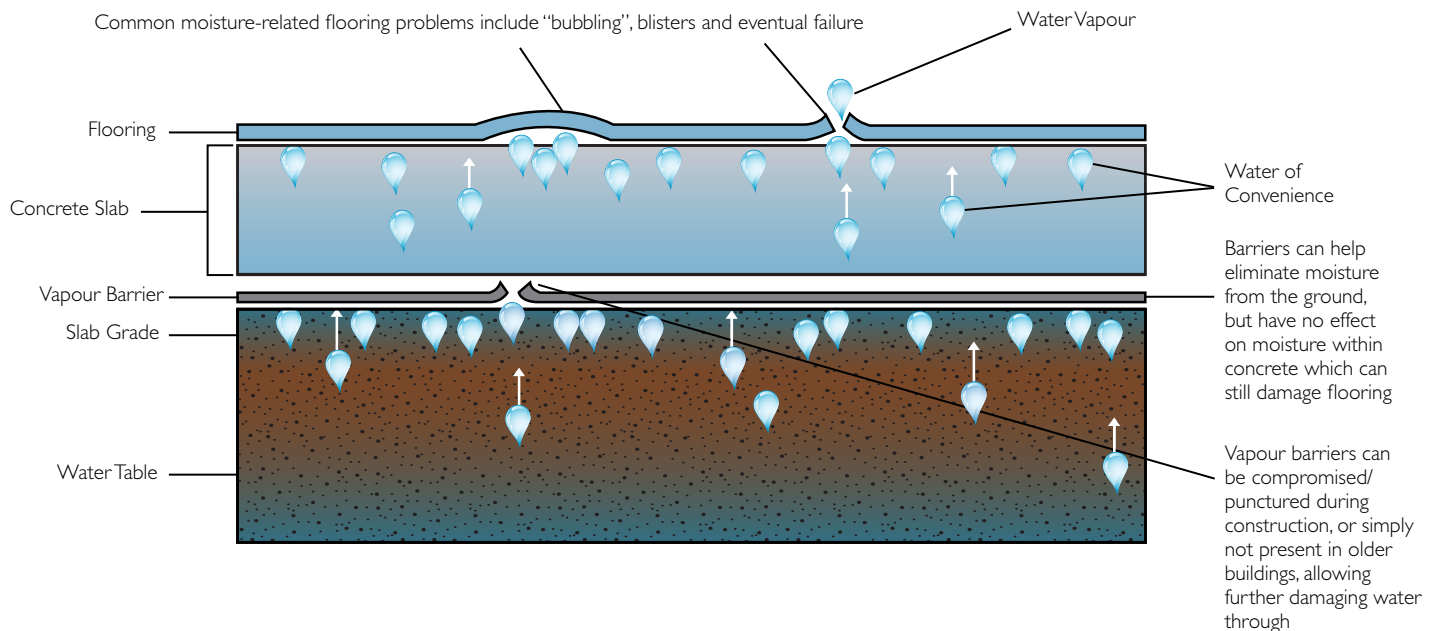


MOISTURE MITIGATION

When coating slab on grade levels of a parking structure, one of the main concerns is dealing with any moisture drive through the slab. This can be caused by the original construction design, a damaged vapour barrier or moisture trapped in the slab/construction at time of build. Stonhard is in the unique position of having two tried and tested systems specifically engineered to overcome these issues.

Stondri MVT is a high solids epoxy priming system designed to suppress moisture on good quality and new concrete.

For older more damaged concrete, **Stonfil OP2** provides a unique combination of moisture management and levelling ability to ensure the perfect base layer for subsequent StonDeck Systems.



VALUE ADDED SUPPORT



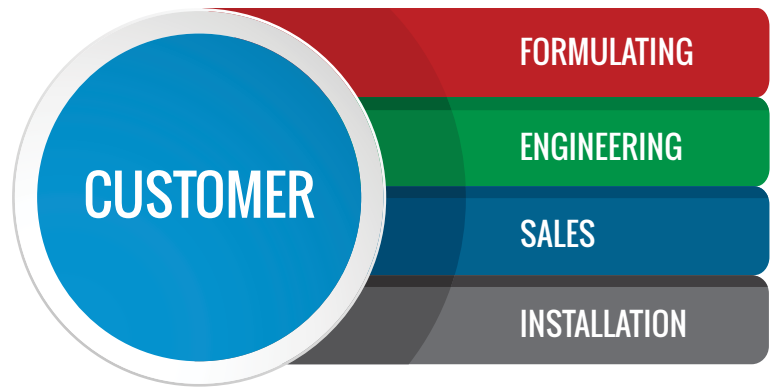
TECHNICAL SUPPORT

We are dedicated to providing value to our customers through technical advancement, specification assistance and technical support coupled with our "Best In Industry" customer support programs and service. Our 55,000 square foot administrative and industrial facility offers customers exceptional sales, customer service, engineering and technical support for each of our product lines.

TRAINING

We believe training is essential and we strive to improve both the skills and knowledge of our employees as well as our customers. Our highly experienced Engineering team conducts regular training sessions at our onsite Training and Education Centre, which also includes a sample laboratory and spray booth.

SINGLE SOURCE COMPLETE TURNKEY OPERATION



COMPLEMENTARY PRODUCTS



STRUCTURAL STRENGTHENING

Our unique carbon fibre system is utilized to strengthen and upgrade structures and buildings in cases of construction errors, increase carrying capacity, restore fire and corrosion damage and resist seismic loads.



CONCRETE RESTORATION

High performance solutions for concrete repairs from a world leader in cementitious and epoxy repair technology with mortars designed for overhead, through slab and fast cure horizontal repairs.



LEAK INJECT WATERPROOFING SYSTEMS

For water penetration in deep construction such as rail and road tunnels, or moving cracks in structures such as parking decks and basements, our range of injection resins covers all eventualities including Rigid and Flexible Polyurethanes, Acrylic Gels and Structural Epoxy Injection Resins.



ANTI-CARBONATION COATINGS

Stonhard offers a range of high performance and decorative anti-carbonation coatings to enhance any parking structure.



NATURAL STONE GRIP SYSTEM

StonWalk is a seamless and slip-resistant bonded natural stone aggregate system that has been designed to ensure that walkways and external concourse areas reflect the natural beauty of the outdoors. It is ideal for restoring pedestrian walkways and entrances.

800.263.3112
www.stonhard.ca

